

## SPECIFICATION SHEET

### Equipment

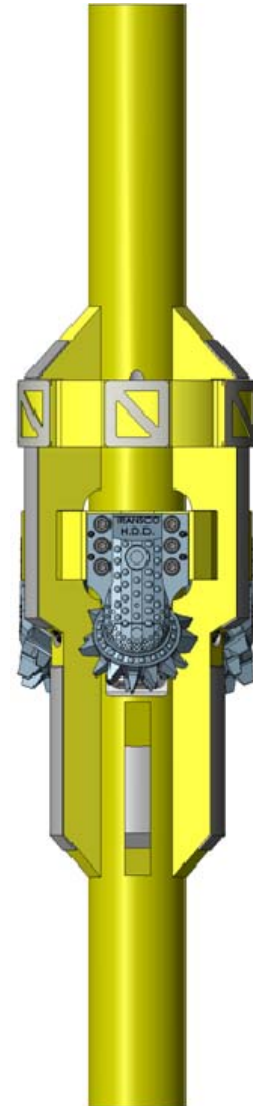
## ORS 17 1/2" x 26" SINGLE STAGE HOLE OPENER

### SPECIFICATION

|                                |                  |
|--------------------------------|------------------|
| Pilot hole diameter            | 17 1/2"          |
| Pilot hole upset length        | 17"              |
| Hole Opener Diameter           | 26"              |
| Hole Opener Upset length       | 22"              |
| Cutter Quantity                | 3 EA             |
| Fish Neck Length (Approx. New) | 28"              |
| Bottom Hole Length             | 21"              |
| Fishing neck diameter          | 9"               |
| ID                             | 2 13/16"         |
| Overall Length (Approx. New)   | 102"             |
| Thread type top                | 7 5/8" Reg. Pin  |
| Thread type bottom             | 7 5/8" Reg. Box  |
| Number of nozzles              | 6 EA             |
| Weight                         | 1450 KG          |
| Cutter Type                    | Milled Tooth/TCI |
| Bearing Type                   | Sealed Roller    |
| Gauge Insert Shape             | Dome             |

### RECOMMENDED DRILLING PARAMETERS

|                       |                        |
|-----------------------|------------------------|
| Maximum Flow Rate     | 7000 LPM               |
| Minimum Flow Rate     | 1800 LPM               |
| Rotary Speed          | 25 – 120 RPM           |
| Weight on Hole Opener | 4 to 10 ton pr. cutter |



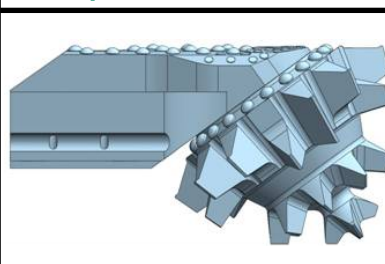
### SPECIFICATIONS - LEG ASSEMBLY

|                                |                              |                               |
|--------------------------------|------------------------------|-------------------------------|
| Cutter Type/ IADC              | Milled Tooth/ 1-1-5 to 2-3-5 | TCI/ 4-1-5 to 5-3-5           |
| Inner Shape                    | Teeth Interrupted/ Hardfaced | Tungsten Carbide Chisel       |
| Gauge Insert Shape             | Tungsten Carbide Dome        | Tungsten Carbide Dome         |
| Max Face Contact Length/Cutter | 8.75" (222mm)                | 8.75" (222mm)                 |
| Bearing Type                   | Sealed- Roller/Ball/Friction | Sealed – Roller/Ball/Friction |
| Weight                         | 66kg/ 146lbs                 | 74kg/ 163lbs                  |
| Formations                     | Soft to Medium               | Medium to Hard                |
| Operating Weights              | 4 to 10 ton pr. cutter       | 4 to 10 ton pr. cutter        |

### ENGINEERING FEATURES

|  |
|--|
| * Pressure Compensator   |
| * Shirt Tail Protection  |
| * Self Sharpening Teeth (on the M10 cutters)                     |
| * Side Locking Safety Dowels                                     |
| * Stainless Cir Clips to M24 high tensile socket head cap screws |
| * 32mm Locating Dowels From Cutter to Hole Opener Body           |

#### 10" Mill Tooth Cutters - M10 Specifications



#### 10" TCI Cutters - T25 Specifications

